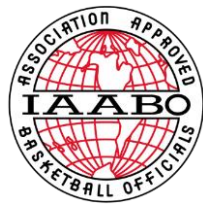


# 2021-2022 – Summary of Uniforms, Equipment and Apparel Items



(Rule 3-4, 3-5, and 3-6)

Rule changes highlighted in yellow

## LEGAL



- Head coverings worn for religious reasons shall not be made of abrasive or hard materials.
- Must fit securely so it is highly unlikely to come off during play.
- **NOTE:** The State Association shall be notified, after the contest, if there is a concern about a head covering worn for religious reasons.
- **EXCEPTION:** If a participant is required by a licensed medical physician to cover the head with a covering or wrap, the physician's statement is required before the state association can approve a covering or wrap.

## HEAD DECORATION AND HEADWEAR

## LEGAL

with approval from State Association



## HEADBANDS

- May not be knotted or have extensions, even if extensions are tucked in.
- May only have one logo.
- May be up to 3 inches wide.



ILLEGAL



ILLEGAL



LEGAL

## Q-COLLAR

- Safety device worn around the neck to protect brain from effects of repetitive impacts.

## LEGAL

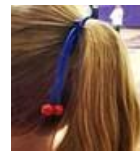


## LEGAL

## HAIR CONTROL DEVICES



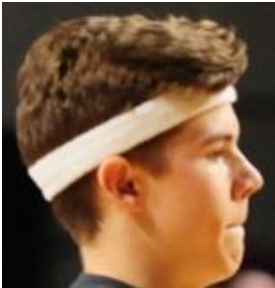
- Item that goes around hair only.
- No color restrictions.
- Must be of soft material.
- Beads are prohibited.



ILLEGAL

## HEADBANDS, WRISTBANDS, ARM/LEG SLEEVES, COMPRESSION SHORTS and TIGHTS

- Must be a single solid color: white, black, beige, or the predominant color of the jersey.
- May only have one logo.



- All such articles for all teammates must be the same color.

## UNDERSHIRTS

- Must be a single solid color similar to the torso of the jersey.
- Sleeves' edges may not be frayed and must be the same length per player .
- One teammate may have short sleeves, another may have long sleeves.
- May only have one logo.



LEGAL



ILLEGAL - color

### MEMORIAL PATCH

- Only one patch allowed.
- Not a number
- Above neckline or in side insert
- No more than 4 in<sup>2</sup>



### SCHOOL OR CONFERENCE LOGO/MASCOT

May be at apex of jersey neckline on front/back and/or either side insert.



### AMERICAN FLAG

May be worn anywhere on the jersey provided it does not exceed 2 x 3 in. or interfere with visibility of number.



### LOGOS

One visible manufacturer's logo is permitted on any apparel item, limited to 2¼ square inches.



LEGAL LEGAL LEGAL

### LEGAL



### SHORTS

- No color restrictions.
- May be folded or rolled at the natural waistband seam.
- Must comply with Rule 3-4-5 restricting uniform pants to only one visible manufacturer's logo.

### ILLEGAL



### RELIGIOUS and MEDICAL ALERT MEDALS

- Not considered jewelry.
- Religious medals must be taped and worn under the uniform.
- A medical alert medal must be taped and may be visible.



### JEWELRY

- **Not** permitted.
- May **not** be taped.
- Must be removed.



### BRACES

- Manufactured knee and ankle braces **do not** need to meet any color restrictions.
- A brace is defined as anything **worn for a medical purpose** to increase stability.



### SHOES AND SOCKS



Not "apparel" items, so no color or logo restrictions.

### WRISTBANDS

- Made of absorbent material.
- Must be worn below elbow.
- Only one per arm.



### ← ILLEGAL

Color of headband and leg sleeves do not match.



← ILLEGAL  
Logo is too big.



### ↑ ILLEGAL →

Sleeves must be a single solid color.



Silicone bands  
ILLEGAL ↓



### LEGAL →

Color of headband and leg sleeves match.

